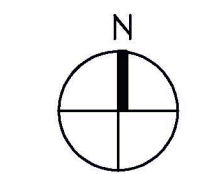
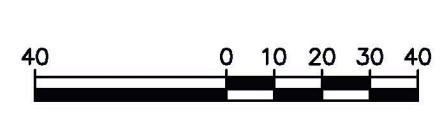


NEW DESIGN SK15

SK15: This design takes into account the location of the school's septic fields and the 9/11 memorial. This design exceeds the available budget by \$70,000 due to the additional construction of the roadway behind the school. In addition, busses would be exiting the driveway by the blind curve on Haviland Road.



Hyde Park-Haviland Middle School
1"=40'-0"



S.E.D. Control No. 13-08-01-06-0-001-018

Rev. No.	Date	Description
----------	------	-------------

**Hyde Park Central
School District**

complex world
CLEAR SOLUTIONS
Tetra Tech Engineers, Architects
& Landscape Architects, P.C.



Hyde Park Central School District

**Renovations to:
Haviland Middle School**

**Bus Loop Plan
30 BUS PLAN**

Drawn by: JMS	Date: June 14, 2010	Drawing No.:
Tetra Project No.:		SK-15
08060-09001		

Rendering 15

Pros

- **No aesthetic change, maintains the current front curve and lawn in its entirety.**
- **No affects on septic fields or 911 memorial**
- Angled parking
- Multiple outside door access reduces student congestion upon entering / exiting building
- Assigned permanent bus spaces
- Parent loop stays in front giving separation of parent & bus traffic
- Increases staff / visitor parking

Cons

- **Exiting on a limited sight curve via the east exit, increased possibility of accidents**
- Students crossing traffic pattern, behind building to athletic fields at end of day
- East parent entrance / bus exit shared, creating traffic bottleneck
- Additional cost for snow removal, maintenance of road behind building
- Loss of a sports field
- **Exceeds Prop III budget by approximately \$70,000**